

Temple University School of Medicine Facts:

- 550 full-time and 50 part-time faculty members, 840 medical students, 140 graduate students and 12,000 alumni
- One of the top research-oriented medical schools in the nation and the second-highest ranked in Philadelphia
- Fourth most popular medical school in the nation, receiving 11,242 applications for the 2014-2015 school year
- One of the top 10 medical schools in the nation for enrolling and graduating physicians from groups underrepresented in medicine
- Attracted over \$90.7 million in National Institutes of Health (NIH) grants in 2013
- Nation's 18th highest funded Neuroscience Department
- Provides international clinical opportunities offered by the Global Health Program — one of the highest student-rated programs
- 50-plus community service activities and organizations
- Learn more at temple.edu/medicine



Office of Admissions
3500 N. Broad Street, Suite 124
Philadelphia, PA 19140
Phone: 215-707-3656 | Fax: 215-707-6932
medadmissions@temple.edu
www.temple.edu/medicine

Recruitment, Admissions and Retention Program

PHONE: 215-707-3595
EMAIL: cadena@temple.edu

MD/MA in Urban Bioethics

PHONE: 215-707-7178
EMAIL: CBUJHP@temple.edu

MD/MBA Program

PHONE: 215-204-3890
EMAIL: toxinfo@temple.edu

MD/MPH Program

PHONE: 215-204-5105
EMAIL: publichealth@temple.edu

MD/PhD Program

PHONE: 215-707-3976
EMAIL: mdphd@temple.edu

Post Baccalaureate Program

PHONE: 215-707-4725
EMAIL: postbac@temple.edu



Where Medicine Comes to Life
Temple University School of Medicine



facebook.com/TempleMedSchool



Exceptional students, clinicians and researchers – with a zeal for education, research and patient care. That's Temple University School of Medicine.

Temple's primary mission is to educate the next generation of physicians. Our graduates secure residencies at top programs across the country, and our alumni are advancing academia, clinical practice and industry all across the globe. Temple has produced scores of leaders in medicine during its 111-year history.

Biomedical research is also central to Temple's mission. Our world-class faculty sets the pace in key areas of investigation, pushing the boundaries of science to advance patient care.

Temple University School of Medicine is listed as one of the top research-oriented medical schools in the nation in *U.S. News & World Report's* Best Medical Schools 2015 rankings. Temple had the second-highest ranking of all medical schools in Philadelphia. *U.S. News* also ranks Temple University Hospital, our primary clinical affiliate, among the best hospitals in the greater Philadelphia area. Hundreds of Temple faculty and alumni are cited for excellence in peer-reviewed rankings year after year.

Most importantly, Temple is an organization with a social conscience. We are recognized for providing unsurpassed care to an underserved community. We are proud to serve as both a first-class academic medical center and as the leading safety net healthcare provider in the Commonwealth of Pennsylvania.

Temple's mission is an exceptional one, and every member of our team—including students—serves as a mission steward.

Larry R. Kaiser, MD, FACS
Dean, Temple University School of Medicine
Senior Executive Vice President for the Health Sciences
President and CEO, Temple University Health System

We Bring Medicine to Life

It's more than theory...it's practice
It's more than thinking...it's doing
It's more than wishing...it's becoming

Each year Temple University School of Medicine (TUSM) carefully assembles a class of 210 students who have achieved academic excellence and demonstrated a commitment to serving others. The diversity of our students includes various ages—from recent college graduates to those changing careers—and students from a wide variety of cultural, socioeconomic and geographic backgrounds. Everyone here—both faculty and staff—is invested in helping you become the best physician you can be.

TUSM confers the MD degree; the PhD (Doctor of Philosophy); and MS (Master of Science) degrees in Biomedical Sciences; and the dual degrees MD/PhD, MD/MA in Urban Bioethics, MD/MPH and MD/MBA. We are a vital part of Temple University and a world-class center of teaching, research and healthcare that offers a total of seven first-professional degree programs.

Temple is renowned for a culture of service. We place particular emphasis on attracting future physicians who will provide care for underserved populations. Through their commitment to fulfilling the medical needs of our North Philadelphia neighbors and surrounding communities, our faculty passes on this tradition of service to our students.

With over 11,000 applications for the 2014–15 school year, TUSM is the fourth most popular medical school in the nation



Admissions

Welcome to the
Temple University School
of Medicine (TUSM)

From our humble beginnings as an evening medical college for working Philadelphians in 1901, Temple has emerged as a leader in humanistic education for the next generation of physicians. Well-positioned to discover



and treat disease, our graduates always do so with a compassionate focus on excellent care for each patient. We have a unique focus on service to others and a special connection to our community—a commitment to our neighbors that is a way of life, not just a part of our curriculum.

This also is the most exciting time in our school's history. Since its opening in 2009, our 480,000-square-foot, state-of-the-art Medical Education and Research Building (MERB) has become the school's nexus. It is home to more than 550 scientists, academics, researchers and staff. With supportive faculty by your side, it's also where you will begin to master both the science of medicine and the art of caring for human beings—as well as establishing friendships and collaborating with your peers and mentors.

Renowned for unsurpassed clinical training and exceptional researchers, the School of Medicine is internationally recognized, nationally honored and locally vital. With such a reputation, attending TUSM opens doors and makes you part of a strong, supportive network that will serve you throughout your career.

We look forward to sharing these exciting times with you. We invite you to join us on your journey to achieving your goals—and to consider joining our Temple family.

Audrey B. Uknis, MD
Professor of Medicine and Senior Associate Dean for Admissions and Strategy

Arthur M. Feldman, MD, PhD
Executive Dean, TUSM and Chief Academic Officer, Temple University Health System

Born in the Dominican Republic and raised in New York City, Yendi Linares is from an economically disadvantaged background—and feels right at home at TUSM: “Temple works hard at making you feel comfortable and ensuring you excel. The student body is so cohesive, everyone is about making sure everyone does well”—a culture that, she says, is nurtured by the faculty, who from early on also expose students to a tremendous range of patients and disease processes. “When we go to other hospitals, attending physicians are surprised about how much we know, what we know how to do and how independent we are,” says the fourth-year student. Linares also appreciates the community service opportunities Temple provides—including her annual Pediatrics Interest Group trips to mentor children with chronic or terminal illnesses at a Florida camp. “Last January, for the first time I danced with a 14-year-old girl in a wheelchair,” she says, “and seeing how spina bifida affected her and her family and how her doctors made such a big difference for her convinced me I was going into pediatrics,” she says.



Applying to TUSM

How to Apply

Candidates apply through the American Medical College Application Service® (AMCAS®). The application deadline is December 15 of the year preceding matriculation. Once TUSM has received a verified application from AMCAS®, candidates are sent an email with details for access to the online supplemental application at TempleMedOnline. Applications will be considered complete when a supplemental application, supplemental fee and required letters of recommendation are received.

Requirements

TUSM requires a minimum of 90 semester hours from an accredited college or university. Virtually all students will have completed a baccalaureate degree prior to matriculation. Applicants who have not completed the premedical requirements at the time of application will be placed on hold until receipt of transcripts indicating successful completion of prerequisites. Required courses should be directed to the needs of premedical students. Courses designed for non-science majors or allied health students are not acceptable.

Although the Admissions Committee holds no preference for science majors, all applicants—whether science majors or not—must demonstrate capacity for excellence in the sciences. In addition, students should have a broad humanities education and strong writing skills.

Every applicant must take the Medical College Admission Test (MCAT®) within three years of matriculation, and no later than September of the year in which the candidate applies.

Temple considers applications from U.S. citizens or those with permanent resident or refugee/asylee status with the U.S. Immigration and Naturalization Service (INS).

TUSM seeks candidates with strong interpersonal skills, who have the ability to listen and see another's point of view; who possess self-confidence; who are articulate; who are compassionate; and who are socially conscious

Prerequisites for Admission

Course	Semester Hours
Biology (with laboratory)	8
General Chemistry (with laboratory)	8
Organic Chemistry (with laboratory)	8
General Physics (with laboratory)	8
Humanities	6

Interviewing

TUSM seeks candidates who have demonstrated high academic achievement including strong MCAT® scores, supportive letters of recommendations, meaningful medical experience and commitment to community service.

Temple does not conduct “stress” interviews. On the contrary: our interviewers will put you at ease so that you can express the “real you.”

Interviews are held Tuesdays, Wednesdays and Thursdays from September through March. Applicants interview with a faculty member and a student. Interview day also includes:

- a welcome and overview of Temple with the admissions director
- an information session with the financial aid coordinator
- a tour of the campus
- lunch with second-year medical students

Students are notified of admissions decisions by mail within four to six weeks of their interview, but not before October 15.



One in every four people who applies to a U.S. medical school applies to TUSM

Entering Profile 2013

Applications	10,980
Interviewed	1,019
Matriculated	215
Average Age	24
Average GPA	3.68
Average MCAT®	31.59
PA Residents	62%

Special Admissions Programs

BA/MD Program

The Medical Scholars BA/MD program allows mature, exceptionally qualified high school seniors to gain a provisional acceptance to TUSM upon completion of their undergraduate degree. TUSM offers this combined degree with Duquesne University, Washington & Jefferson College and Widener University. The program seeks students with a strong academic background, exceptional standardized test performance, demonstrated leadership and extensive community and healthcare experience.

Early Assurance

The Early Assurance program allows students to be considered by TUSM in their junior year of college. Candidates are nominated by the pre-health advisor from: Temple University, Bucknell University, DeSales University, Duquesne University, Juniata College, Lehigh University, Moravian College, Muhlenberg College, Washington & Jefferson College and Widener University. Nominees must have overall and science GPAs of at least 3.5 at the end of their junior year, as well as a strong commitment to service as demonstrated by extensive community and healthcare experiences. Following an interview, selected candidates will be offered a conditional acceptance to TUSM. MCATs® are required to make an acceptance unconditional.

Early Decision

Applicants who have selected TUSM as their first-choice school are encouraged to apply under the Early Decision program. Applications are due by August 1 of the year before intended enrollment. Supplementary materials are due by August 15. Interviews are scheduled by early September and applicants are notified of admissions decisions by October 1. AMCAS® prohibits applicants who apply under this program from applying to any other medical school.

Post Baccalaureate Program

The Post Baccalaureate Pre-Medical program is for students interested in a medical career who need additional preparation in order to apply to medical school. The program's two tracks include:

Basic Core in Medical Sciences

Program—a 12-month full-time course for students who need to complete the premedical requirements necessary for admission and MCAT® preparation.

Advanced Core in Medical Sciences

Program—a 10-month full-time course for students who have completed the premedical requirements for admission, but need to strengthen their science background and/or MCAT® preparation.

Successful applicants to this unique, challenging and highly selective program become part of a close-knit community of supportive faculty and students. The small class size enables us to advise and support students as they develop the key professional and academic strengths necessary to enter TUSM.

Participants in both tracks complete all the required coursework in the spring semester and take the MCATs® by the end of May. Students who successfully complete the academic and MCAT® requirements matriculate into the MD program in August.

PHONE: 215-707-4725
EMAIL: postbac@temple.edu

A graduate of both the University of Pennsylvania and Northwestern University's prestigious master's journalism program, Steven Stanek's journalism career started strong: *Associated Press* intern in Jerusalem, *National Geographic* freelancer in Cairo, *Baltimore Sun* reporter and Washington correspondent for a United Arab Emirates newspaper. But then, for two reasons, the call of medicine led the son of two doctors to TUSM's post baccalaureate pre-medicine program: the admission guarantee if he did well and Temple's location in North Philadelphia—the same neighborhood where his mother, a cardiologist, has treated patients for decades. "For someone who wants to be a doctor and wants to see a lot of action, being part of that same community at Temple was attractive," he says. "I hadn't looked at the periodic table since 9th grade and it was the most challenging year of education I've ever experienced," adds Stanek, who now is enjoying his third-year clinical rotations. "But the post bac program fills you in on everything you've missed and gets you to where you need to be to go to med school."



Education

The TUSM student body is comprised of 840 medical students and 140 graduate students

TUSM offers ultramodern state-of-the-art facilities including open research spaces, smart classrooms and a clinical skills and robotic simulation center. The TUSM's student-centered philosophy nurtures a collegial learning environment. With outstanding faculty who are truly passionate about teaching, a plethora of service-learning opportunities and uncommon, extensive clinical experiences, the curriculum is justly renowned for producing graduates with first-rate clinical skills.

Curriculum at a Glance

Major components and emphases of the curriculum include:

- The teaching of basic science and clinical medicine is interwoven, just as medicine is practiced
- Emphasis on physician competencies: knowledge, clinical skills, professionalism, humanism, behavior and cultural competencies
- Emphasis on evidence-based, outcomes-oriented, case-based learning
- Promotion of longitudinal relationships between faculty and students
- Increased emphasis on changing demographics (geriatrics, alternative and complementary medicine)
- Use of simulation and standardized patients in clinical training
- Geared toward adult learning styles, not rote memorization of facts, with emphasis on lifelong learning, identification of knowledge gaps and critical appraisal of information
- Training in interdisciplinary, interprofessional teams, again reflecting realistic scenarios of actual practice.



Competencies

A TUSM education provides you with a solid foundation in the fundamentals of basic and clinical science. Our integrated curriculum helps you acquire the knowledge, skills and attributes that are essential in the practice of medicine. Our graduates become proficient in the following areas:

Knowledge

Graduates must be knowledgeable about the scientific basis of medicine and be able to apply that knowledge to clinical problem-solving and the practice of medicine. They must engage in independent learning to remain current in their knowledge.

Patient Care

Graduates must be able to provide patient care that is compassionate, appropriate and effective for the treatment of health problems and the promotion of health.

Interpersonal and Communication Skills

Graduates must demonstrate interpersonal skills that result in effective clinical care.

Professionalism

Graduates must embody the responsibilities of a physician that go beyond knowledge and technical skills and enable the delivery of high-quality healthcare. Professionalism means honesty, maintaining patient confidentiality and trust, mutual respect and commitment to the welfare of patients.

Practice-Based Learning and Improvement

Graduates must be invested in continuing professional improvement—as based upon their assimilation of new knowledge, application of evidence-based medicine and thoughtful reflection and analysis of their prior and current practice patterns.

System-Based Practice

Graduates must demonstrate a knowledge of and responsiveness to the larger context and system of healthcare and the ability to call on system resources effectively to provide optimal patient care.



TUSM offers ultramodern state-of-the-art facilities including open research spaces, smart classrooms and a clinical skills and robotic simulation center

Curriculum

CURRICULUM – YEAR ONE

Block	Block Title	Weeks	Subjects Covered
Orientation	Introduction to Medical Practice	1	Orientation: Introduction to Medical Ethics; Introduction to the Patient
1	Gross Anatomy/Embryology	8	Integrated Systems in Gross Anatomy and Basic Embryology
2	Elements of Bioscience	8	Basics of Genetics; Molecular Biology; Basic Cell and Tissue Structures and Functions; Signaling and Metabolism; Biochemistry of Nutrients; Basic Biostatistics
3	Biological Systems 1	8	Development, Structure, Physiology and Biochemistry of the Musculoskeletal, Cardiovascular, and Pulmonary Systems
4	Biological Systems 2	6	Development, Structure, Physiology and Biochemistry of the Integument, Urinary, Gastrointestinal, Endocrine and Reproductive Systems
5	Biological Systems 3	5	Concepts of Neuroanatomy, Neurophysiology and Behavior; Underlying Neurological and Mental Status Exam
6	Principles of Immunology and Pharmacology	4.5	Introduction to Pharmacology, Immunology and Inflammation
	Doctoring 1	40	Introduction to Culture and the Practice of Medicine

"It's a very hands-on, participatory curriculum," says Lawrence Kaplan, MD '86, professor and associate dean for clinical education. "Skills are one thing, but we also believe that the way you become a physician, culturally and academically, is by us immediately treating you as a peer." His wife, Rosalind Kaplan, MD, associate professor and medical director of Temple Health Women's Care, was shocked at how much more Temple students knew what to do when she first arrived as a resident: "It's definitely for people who immediately want to get their hands dirty." That practical experience begins the first year with sophisticated SimMan simulations and increasingly complex standardized patient scenarios. It continues during clinical rotations when, says Lawrence, "because of the complexity of our patients it's not the easiest environment in which to practice medicine. But it's excellent training, and our patients are happy to have our students participate." Finally, say the Kaplans, there are the close relationships that develop between students and their professors and four-year faculty mentors—all part of the supportive, collegial community that empowers Temple students to ultimately become empathetic, ethical, professional practitioners of the art of medicine.

CURRICULUM – YEAR TWO

Block	Block Title	Weeks	Subjects Covered
7	Microbiology and Infectious Diseases	7	Microbiology; Virology; Parasitology; Infectious Diseases; Antimicrobial Drugs
8	Diseases of the Cardiovascular and Respiratory Systems	6	Pathology, Pathophysiology and Pharmacology of Cardiovascular and Respiratory Diseases
9	Diseases of the Endocrine, Reproductive and Renal Systems	6	Pathology, Pathophysiology and Pharmacology of Endocrine, Reproductive and Renal Diseases
10	Diseases of the Nervous System	4	Pathology, Pathophysiology and Pharmacology of Neurologic and Psychiatric Diseases
11	Diseases of the Gastrointestinal System, Hematology/Oncology and Musculoskeletal System	9	Pathology, Pathophysiology and Pharmacology of Gastrointestinal Diseases and Diseases of the Blood, Skin and Musculoskeletal System
	Doctoring 2	32	Clinical Skills, Professionalism and Medical Ethics

CURRICULUM – YEAR THREE

Required Core Clinical Clerkships

Family Medicine	Internal Medicine	Neurology/ Elective	Ob/Gyn	Pediatrics	Psychiatry	Surgery
6 weeks	8 weeks	8 weeks	6 weeks	6 weeks	6 weeks	8 weeks

Doctoring 3: Evidence-Based Medicine, Professionalism, and Medical Decision-Making

CURRICULUM – YEAR FOUR

Advanced Clinical Clerkships and Electives

Emergency Medicine	Radiology	Subinternship in Medicine	2 OF THE FOLLOWING 3 Critical Care	Second Subinternship*	Surgical Subspecialty	Electives
4 weeks	4 weeks	4 weeks	4 weeks	4 weeks	4 weeks	(5) 4-week blocks

*Second Subinternships: Medicine, Surgery, Family Medicine, Psychiatry, Pediatrics, Ob/Gyn

Doctoring 4: Clinical Decision-Making, Professionalism, and Capstone Course



Medical Education

Preclinical Education

The first two years of the integrated curriculum are divided into interdisciplinary blocks organized according to organ systems. First-year students study the normal functioning of each organ system. Second-year students focus on the disease processes affecting each system and therapeutic options available to treat the diseases.

In our Doctoring curriculum, throughout all four years, students are introduced to the culture and practice of medicine. They learn the basics of clinical skills, professionalism and key topics (including medical ethics, medical economics and cultural competence) that are critical to the practice of medicine. Clinical cases integrate the teaching and evaluation of clinical skills with basic science concepts.

Our Doctoring College System provides a small-group learning community with 30 medical students and eight clinical faculty per college. Serving as mentors, the clinicians help develop students' history-taking and physical exam skills, provide feedback on standardized patient encounters and participate in bedside hospital sessions.

Clinical Education

At the time of admission to TUSM, students are assigned to one of Temple's clinical or regional campuses for their third- and fourth-year clinical training. Applicants have the opportunity to rank their clinical and regional campus preferences on their supplemental application. In making assignments, TUSM makes every effort to honor ranked preferences. All clinical training sites are in Pennsylvania. All offer students the opportunity to both see a wide range of medical disorders in people of varied social, economic and cultural backgrounds and to learn the management of those disorders in diverse ambulatory and inpatient settings. Our clinical and regional campuses include:

Temple University Hospital

For more than 100 years, Temple University Hospital (TUH), one of the nation's premier academic medical centers, has been the major teaching site for TUSM. The 721-bed hospital across Broad Street from TUSM treats more than 210,000 outpatients and admits more than 24,000 inpatients annually. The hospital employs the latest technological and medical

enhancements on its 26-acre Health Sciences Center campus. In addition to TUH, students also gain valuable clinical experience in the city at:

- TUH—Episcopal Campus
- Temple Health's Jeanes Hospital, a community hospital in Northeast Philadelphia
- Temple Health's Fox Chase Cancer Center—one of only 41 National Cancer Institute-designated comprehensive cancer centers in the country
- St. Christopher's Hospital for Children and in the nearby northern suburbs at:
- Abington Memorial Hospital, a major regional hospital

Meanwhile, from history to the visual and performing arts, sports and food, Philly is one of the nation's largest and most culturally diverse and interesting cities.

Crozer-Chester Medical Center

Crozer-Chester Medical Center (Crozer), part of the Crozer-Keystone Health System, provides a full spectrum of wellness, prevention, acute care, rehabilitation and restorative care to the community. Located in Upland, PA, the medical center offers TUSM students a distinctive academic experience in a suburban setting with patient care needs that are similar to an urban hospital. Students receive preclinical and clinical education focused around primary care, a Level II trauma center and integrated community programs. Each year, Crozer admits more than 19,000 patients, treats approximately 53,000 Emergency Department patients and delivers about 1,800 babies.

Crozer offers medical students, residents and fellows an academically rigorous education in a supportive setting. In addition, the campus is conveniently located between Philadelphia and Wilmington, DE, and all of the cultural, sports and food options both cities offer.

Geisinger Health System

Geisinger Health System's medical education programs teach students to deliver and manage care using conventional one-on-one, patient-physician interaction—as well as nationally recognized team processes and cutting-edge approaches to increasing healthcare efficiency, value and quality.

The nation's largest rural health services organization, Geisinger serves nearly 3 million residents throughout 44 counties in central and northeastern Pennsylvania. The physician-led system includes a 1,000-member multi-specialty group practice, seven hospital campuses, two research centers and the 448,000-member Geisinger Health Plan.

Medical students reap the educational benefits of a big-city hospital and the lifestyle advantages of small-town charm. In Danville and the surrounding communities, students enjoy unique restaurants, shopping and cultural activities, plentiful outdoor recreation options and easy access to such major metropolitan areas as New York City, Philadelphia, Baltimore and Washington, D.C.

St. Luke's University Hospital

A tertiary care teaching hospital with a Level I trauma center, St. Luke's University Hospital in Bethlehem, PA, is the center of one of Pennsylvania's largest integrated healthcare networks—and the site of the Temple/St. Luke's Medical School. Each year the 452-bed facility admits over 26,500 inpatients and treats nearly 57,000 Emergency Department patients and 500,000 outpatients.

The hospital's large, diverse patient base allows students to develop their clinical and procedural skills in a patient-centered, educationally focused atmosphere. Patient needs are comparable to a large, urban facility, but the care is provided in a comfortable homelike setting under the guidance of top physicians eager to share their decades of knowledge and experience.

Students interested in this new TUSM regional campus will complete year one of the program at the Philadelphia campus, then for years two through four will relocate to the Bethlehem campus—which has identical goals, objectives and competencies to those at the Philadelphia site.

The Lehigh Valley offers music venues, museums, cultural festivals and sporting events—the Philadelphia Phillies and Flyers' minor league affiliates and collegiate teams—as well as such outdoor recreational activities as hiking, cycling and water sports. Philadelphia, New York City and the Pocono Mountains are all nearby.

West Penn Allegheny Health System

The West Penn Allegheny Health System offers an unparalleled experience in the Pittsburgh region's newly formed Allegheny Health Network (AHN)—a unified healthcare system dedicated to providing affordable, exceptional patient-centered care. AHN's eight hospitals (with 2,000-plus beds) and six surgery centers annually care for 87,000 inpatients, 29,000 observation patients and 1.275 million outpatient visits, as well as handling 299,000 emergency visits.

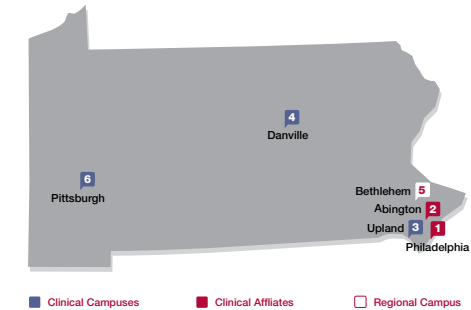
Temple students train at AHN's two comprehensive academic medical centers in

Pittsburgh, Allegheny General Hospital; the latter houses a 'virtual hospital' with the latest SimMan and other lifelike manikins.

Students can also pursue research, undertake scholarly endeavors and participate in residency interest groups in internal medicine, anesthesiology and emergency medicine, as well as volunteer at homeless shelters and clinics.

Meanwhile, the *Chicago Tribune* recently called Pittsburgh "... one of our nation's most underrated cities, with a beauty as breathtaking as its is obvious ... and a healthy dash of Old World, working-class charm."

Clinical Teaching Sites



1. Philadelphia locations:
 - Temple University Hospital (TUH)
 - TUH Episcopal Campus
 - Temple Health's Jeanes Hospital & Fox Chase Cancer Center
 - St. Christopher's Hospital for Children
2. Abington Memorial Hospital, Abington
3. Crozer-Chester Medical Center, Upland
4. Geisinger Health System, Danville
5. St. Luke's University Health Network, Bethlehem
6. West Penn Allegheny Health System, Pittsburgh

Fox Chase Cancer Center, one of only 40 National Cancer Institute-designated Comprehensive Cancer Centers in the country, offers TUSM students outstanding research and clinical opportunities



Temple University Hospital



Crozer-Chester Medical Center



Geisinger Health System



St. Luke's University Health Network



West Penn Allegheny Health System

Dual Degree Programs

For those students also interested in such fields as research, urban bioethics, public health or the business of healthcare, TUSM offers robust dual degree programs. Approximately five to 10 percent of our student body elects to pursue joint degrees.

MD/PhD Program

The MD/PhD Program offered by TUSM provides the opportunity to gain expertise in clinical medicine and become broadly trained in basic science research at an institution noted for excellence in teaching and research. The comprehensive seven-year program attracts bright, highly motivated students considering a research career in academic medicine.

- **Years 1 and 2:** 1st and 2nd years of the Medical School curriculum
- **Years 3 to 5:** Original research project and PhD course completion under the guidance of a preceptor
- **Years 6 and 7:** 3rd and 4th years of the Medical School curriculum

Establishing a solid research foundation, the first two years of the program include four laboratory rotations. In subsequent years, students concentrate on one of five areas for their doctoral research:

- Cancer Biology and Genetics
- Infectious Disease and Immunology
- Molecular and Cellular Biosciences
- Neuroscience
- Organ Systems and Translational Medicine.

Within these five broad fields, MD/PhD candidates have the opportunity to work closely in the School of Medicine's world-class, disease-based research centers (see page 15) with their advisors and faculty—all of whom are premier researchers in their respective fields. Such in-depth involvement with cutting-edge research is one of the key reasons that the MD/PhD Program is an exceptional way to jumpstart a career in academic medicine.

PHONE: 215-707-3976
EMAIL: mdphd@temple.edu

MD/MA in Urban Bioethics Program

The MD/MA in Urban Bioethics Program addresses today's extreme inequalities of health and access to critical resources—inequalities that leave many urban dwellers and communities distinctly disadvantaged, disenfranchised and vulnerable. Offered through Temple's Center for Bioethics, Urban Health & Policy, the program trains students in the ethics and values of health, healthcare delivery, and health law and policy that underlie such complex urban disparities.

Graduates possess the practical skills, theoretical orientation and resources required to maximize care and to be innovators in research, care delivery, and policy and advocacy work—all pluses considering the rapidly changing healthcare environment. Students will complete the requirements for the MA concurrent with the medical school courses with no additional time necessary to complete the MA coursework.

PHONE: 215-707-7178
EMAIL: CBUHP@temple.edu

MD/MPH Program

A joint program between Temple's School of Medicine and Department of Public Health, the MD/MPH enables students to earn a Master of Public Health (MPH) while completing the MD program. The MD/MPH enhances medical careers by enabling physicians to better understand and address the social, behavioral and environmental factors that influence the health and health practices of their patients. The MD/MPH offers four concentrations:

- Social and Behavioral Science
- Environmental Health
- Epidemiology and Biostatistics
- Health Policy and Management

In the five-year MD/MPH program, medical students begin the MPH curriculum part-time during the first year of medical school and complete the program with one year of full-time MPH coursework between the second and third years of medical school.

PHONE: 215-204-5105
EMAIL: publichealth@temple.edu

MD/MBA Program

Offered by TUSM and Temple University's highly ranked Fox School of Business, this dual-degree program allows students to enroll in online business courses any time during medical school. No additional time is necessary to complete the MBA coursework.

The Online MBA program begins with a five-day orientation residency—during which students complete their Leadership Development course and engage in networking, professional development, technology training and team-building activities. To earn the MBA, students must complete 48 credits—including 12 elective credits awarded toward the MBA upon successful completion of the Doctoring 1 and 2 medical courses.

The lecture-style content of each four-week online business course is delivered through HD videos that students can view whenever and wherever they want. Finally, an integrative capstone experience allows students to demonstrate, in a real-world setting, that they have mastered the knowledge and skills that both the Fox MBA and today's healthcare business environment require.

PHONE: 215-204-5890
EMAIL: foxinfo@temple.edu



Global Medicine Program

The Global Health Program is a comprehensive, hands-on enrichment program that provides students with global clinical and research opportunities. Highlights of the program include interactive didactics that range from primary preventative healthcare to emergency disaster care, early clinical exposure to global medicine leaders, international service and research experiences. This program is life changing and career inspiring. Program participants have developed incredible life and professional skills, augmented residency match possibilities, presented their research at national symposiums, created future niches in international emergency and disaster care and fulfilled personal and professional dreams by making a difference for those in need.

First & Second Year

TUSM offers disaster and global medicine electives that prepare students for service experiences both domestically and abroad as early as the first year of school. These electives include workshops, lectures, clinical skills sessions and an interactive field wilderness medicine experience. Workshops include medical note and prescription writing as well as how to develop medical student presentation and research skills.

The first international clinical experience often occurs the summer following the first year of medical school. Students typically complete these experiences in such countries and regions as Ghana, Peru, Central America and China. While abroad, students work with attending physicians to:

- care directly for international patients
- participate in observational research studies
- explore the culture and natural environment

Third & Fourth Year

Senior medical students interested in a wide range of clinical and research-related goals can undertake clinical rotations at more than a dozen affiliated medical schools on five continents—and at other institutions if they so desire. During these experiences abroad students develop medical skills in a treatment environment that is quite different from ours—and sometimes with limited availability of medical resources. They also gain a broader understanding of medical operations internationally and expand language skills (typically Spanish). To enhance their teaching and leadership skills, students can also assist with first- and second-year student projects.

During his first year, the Temple Emergency Action Corps (TEAC) elective introduced Paul Navo, MPH, to writing prescriptions, starting IVs and addressing behavioral issues. Says Navo, who earned both his BS and MPH at the University of California, Davis: "It really exposes you to aspects of medicine that you don't usually experience during the first two years of medical school." Since then Navo—whose mother is the chief dental officer of a large Oakland-based federally qualified Hispanic health center—has put what he learned into action. Through TEAC, each week he offers health literacy presentations on such topics as diabetes, HIV and asthma at a male homeless shelter. He also spent his spring break with 13 other TEAC students and three attending physicians caring for residents of an impoverished Nicaraguan village. They tackled dehydration, respiratory infections, parasites and musculoskeletal pain. "It was fantastic," he says. "I got to practice my interviewing and doctoring skills in Spanish, helped people who are really in need and enhanced my ability to empathize with those who are a lot less fortunate than I am."



A life-changing experience, the Global Health Program is one of TUSM's highest student-rated programs

Research

Inspired by his mother, who ran a microbiology lab outside Minneapolis, and his grandmother's multiple sclerosis, which got him interested in stem cells and regenerative medicine, Jason Duran has always wanted to be a scientist. Thanks to TUSM's dual MD/PhD program, that dream is becoming a reality. Two years ago Duran completed his doctoral research under Steven R. Houser, PhD, director of the school's Cardiovascular Research Center and recipient of a rare, prestigious 10-year NHLBI research grant. Duran's focus: injecting cardiogenic stem cells found in bone tissue into hearts damaged by heart attacks. After seeing promising results in small animals – and as Duran completes his clinical rotations – he continues working in the lab to try to translate the technique into larger animals and, ultimately, humans. "I couldn't have asked for a better advisor than Dr. Houser, who is definitely at the top of the cardiac research field," he says. "Physician-scientists provide the critical link between the lab and the clinic, and this program has definitely prepared me to do that."

TUSM is ranked as the second highest research-oriented medical school in Philadelphia and the third highest in Pennsylvania by *U.S. News & World Report*. At TUSM, you will have the opportunity to work on basic science and clinical research projects in ultramodern facilities with some of the world's greatest scientists. In the vanguard of discovery, our programs aim to reduce the devastating effects of heart and lung disease, cancer, neurological disorders and other serious diseases. Already, numerous scientific discoveries have advanced from Temple's labs and into clinical trials—work that may one day profoundly improve human lives.

Research Opportunities

Research is critical to excellent medical education and patient care. The trend in medical research today is interdisciplinary and translational, requiring teams of researchers from many disciplines to apply basic research findings to clinical interventions and therapeutics. You will have the opportunity to study and learn with faculty from our innovative research centers:

- Independence Blue Cross Cardiovascular Research Center
- Center for Bioethics, Urban Health and Policy
- Center for Inflammation, Translational and Clinical Lung Research
- Center for Neurovirology
- Center for Obesity Research and Education
- Center for Substance Abuse Research
- Center for Translational Medicine
- Comprehensive NeuroAIDS Center
- Fels Institute for Cancer Research and Molecular Biology
- Fox Chase Cancer Center
- Shriners Hospitals Pediatric Research Center
- Sol Sherry Thrombosis Research Center
- Temple Autoimmunity Center
- Center for Bioengineering Research.



Our researchers are responsible for groundbreaking advancements in areas across the scientific spectrum, including:

-  Cancer Biology
-  Cardiovascular Diseases and Thrombosis
-  Cell and Developmental Biology
-  HIV
-  Immunology and Autoimmunity
-  Neuroscience
-  Pharmacology
-  Pulmonary Disease
-  Substance Abuse
-  Translational Medicine

Fox Chase's ground-breaking, collaborative research environment:

- Baruch S. Blumberg, MD, PhD, won the 1976 Nobel Prize in medicine for discovering the hepatitis B virus
- Irwin A. Rose, PhD, won the 2004 Nobel Prize in chemistry for his influential studies defining intracellular protein processing

Compassionate Community Service

At Swarthmore College, Kathryn Anne Stockbower was an Academic All-American who set the NCAA Division III women's basketball career record for the most double-double games (both points and rebounds in double figures). To 8th-graders at the Mary McLeod Bethune School near the TUSM campus, Stockbower is a different kind of star. Two years ago she spearheaded an effort to create Science in Philadelphia Schools (SIPS) for the resource-strapped school. Funded by TUSM's Student Government Association (SGA), two afternoons a week TUSM students lead small student groups in hands-on science experiments. They also have taken them to the Franklin Institute and TUSM's health career day, and SGA staged a health fair at Bethune. "It's definitely been humbling to gain insight into all the stresses they have to navigate," says Stockbower, who is now in her third-year clinical rotations, "and it's opened my eyes to the barriers their families deal with regarding access to healthcare and healthy food." Her favorite memory: after youths attending the TUSM career day helped save a SimMan from a heart attack, several told her, "Maybe someday I could be a doctor."

TUSM attracts students of the highest academic caliber who have demonstrated a capacity for volunteerism and altruism and a genuine desire to help those in need. Compassion and service to others are hallmarks of Temple students.

The diverse interests of our students are represented, in part, by the more than 50 student-run campus groups. Orientation Week includes a Student Activities Fair, where many student groups set up booths to answer questions and provide an opportunity to join any group that interests you. During the school year, if you so desire, you will also have the opportunity to start an organization of your own specific interest.

Student Activities/Organizations

20 Ways to Learn through Service

1. Join Temple CARES (Community Advocacy, Referral and Education Services), a student-run health clinic in North Philadelphia.
2. Check out TUSM's Latino Medical Student Association and participate in screenings and blood drives.
3. Train with the Temple Emergency Action Corps in disaster response in order to mobilize during local, national or international emergencies and provide basic medical care to those affected.
4. Mentor youth in science at a local elementary school through the Science in Public Schools Initiative.
5. Mentor local kids through the Student National Medical Association.
6. Help out student members of Physicians for Social Responsibility, who do everything from lobbying for gun control to building low-income housing and participating in neighborhood improvement projects.
7. Join the Pediatric Interest Group, which runs a reading program for pediatric patients and hosts Alex's Lemonade Stands to benefit pediatric cancer research.
8. Volunteer with Prevention Point/Street Side Health Clinic and conduct sterile syringe exchanges for IV drug abusers.
9. Participate in Temple Arts Groups which builds a strong sense of community both within and outside of TUSM through concerts and other art events.
10. Hang out with TUSM's Lesbian, Gay and Bisexual People in Medicine and volunteer at a community outreach center that provides STD testing and referrals.
11. Plan a medical mission with TUSM's International Health Organization.
12. Ride with the Temple University Emergency Medical System, a bike-based EMS response group.
13. Join Voices, a Spanish-language group offering interpreter service at Temple University Hospital.
14. Lobby with the American Medical Student Association in Harrisburg and Washington, D.C., to promote awareness of current health policy issues.
15. Host Shabbat dinners and cultural events with the Jewish Student Union.
16. Participate in Bridging the Gaps, a city-wide collaboration that provides internships in community organizations and addresses how health disparities affect neighborhoods.
17. Learn more about South Asian culture with the South Asian Health Student Organization through ongoing events, conferences and speakers' seminar.
18. Join Big Friends, a tutoring/mentoring program for the children of Kenderton Elementary School, in the Medical School's backyard.
19. Join one of the many specialty-related interest groups to take part in community service activities and connect with faculty from particular disciplines.
20. Represent your classmates through the Student Government Association, which supports, advocates for and provides resources for TUSM students.



Student Life

At TUSM, the doctor you will become is the sum of all you experience both in class and in the community. Consider Cara Smith, the daughter of an internist and a midwife. In class, as a block representative, the second-year student helps shape the curriculum by relaying student course-improvement suggestions to professors. Prior to joining Temple, the Brown University graduate worked as a senior research technician at Children's Hospital of Philadelphia, rebuilt war-damaged homes in El Salvador, researched a women's empowerment program in Honduras, and established a Mumbai program that provides nutritional supplements for pediatric HIV patients. Now simultaneously earning a master's degree in urban bioethics, Smith says, "You need to know what's going on in your patient's lives—the historic, socioeconomic, racial or gender factors—that might be affecting their health status." At Temple, Smith helps lead Prevention Point, a free van-based neighborhood health clinic. Accompanied by an attending physician, she and her peers provide free healthcare to walk-up patients. She also volunteers at Puentes de Salud, a Latino health clinic. "My future," she says, "lies in caring for underserved populations."



According to the most recent edition of the *Diversity in the Physician Workforce: Facts and Figures 2010*, published by the AAMC, Temple ranks 6th in the total number of African-Americans graduating from medical school between 1978 and 2008



In keeping with its holistic approach towards medicine, TUSM offers students a myriad of support services that range from academic and financial to personal and social.

Student Support

Student support—whether it is formal help with study skills or time management or an informal talk with a professor to elucidate a lesson—is built into the fabric of a TUSM education. Led by the associate dean for student affairs, our student support network includes faculty advisors, deans and individual faculty members. The Office of Student Affairs offers confidential support and counseling regarding financial assistance, academic progress, personal and social needs and concerns, and career counseling.

Recruitment, Admissions and Retention Program

The Recruitment, Admissions and Retention (RAR) Program provides support for students from groups underrepresented in medicine and from financially disadvantaged backgrounds.

The RAR Program has a legacy of more than 30 years of ongoing support services to applicants and medical students from underrepresented groups in medicine. The primary purpose of the program is to help TUSM identify, enroll and graduate physicians from diverse backgrounds and retain them in the profession of medicine. This nationally recognized initiative has already provided scholarship and mentoring opportunities to more than a thousand African American, Hispanic and Native American students—as well as other students from financially disadvantaged backgrounds.

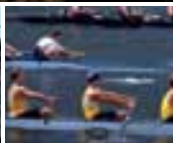
Student Financial Services

Managing student indebtedness is a major goal of the school. A dedicated financial aid coordinator provides information to applicants on interview day and works closely with students the summer before matriculation. Most awards are renewable for all four years as long as students maintain good academic standing. A thorough, structured program of financial counseling and debt management continues throughout a student's time at TUSM. A limited number of merit and need-based scholarships are available to incoming students. Merit scholarships are awarded to the most academically qualified students shortly after the offer of admission. Need-based scholarships are awarded starting in the spring prior to matriculation to accepted students with extreme financial need, as determined by the Free Application for Federal Student Aid (FAFSA).

Residencies

TUSM graduates secure impressive residencies, a fact often attributed to our school's reputation for providing superior clinical training. Of recent graduating classes, the majority of seniors chose university hospitals or major affiliates of a university hospital for residencies. Some 45 percent of TUSM graduates pursue primary care residencies in internal medicine, family medicine or pediatrics, and 55 percent of our students select from a full range of specialties and subspecialties. The geographical distribution of our graduates' residencies is coast-to-coast and border-to-border. A summary of recent residency match positions is included in the accompanying insert.

At the stroke of noon on **Match Day**, TUSM's fourth-year students gather in our atrium with their families, partners, and friends. With the faculty and first- through third-year students watching from the balcony, the fourth-year students simultaneously open the envelopes containing their residency match results. Excitement surrounds the discovery of where they will conduct the next phase of their medical training



Philadelphia images, clockwise: Philadelphia skyline, Philadelphia Museum of Art, Robert Indiana's Love sculpture in Love Park, Phillies baseball game at Citizens Bank Park (Photo by M. Kennedy for GPTMC), Liberty Bell (Photo by R. Kennedy for GPTMC), competitive rowing on the Schuylkill River (Photo by M. Kennedy for GPTMC).

Welcome to our city of neighborhoods

Welcome to cityscapes and countrysides

Welcome to the streets where Ben Franklin,
Bill Cosby and Rocky Balboa walked

Welcome to the home of the Temple Owls

**Welcome to Philadelphia and
the Temple Family**

About Philadelphia

Philadelphia, the hometown of Temple University School of Medicine, will be your hometown, too. Philadelphia is both a national hub for medicine and healthcare and one of the major cultural and historical centers in the United States. The fifth-largest city in the country, Philadelphia combines urban excitement with the hospitality of a small town. The city is one of our nation's most historic, intercultural and walkable. Stroll from Chinatown to our open-air Italian Market, or from Independence Mall to artists' alcoves in Old City. A city of unique neighborhoods, Philadelphia offers celebrated restaurants, world-renowned cultural attractions and world-class athletics. By car, bus or train, our accessible campus is an easy commute to New York City and Washington, D.C., and a short drive to beach and mountain resorts.

- Philadelphia Museum of Art
- The Barnes Foundation, with a new site on the famed Benjamin Franklin Parkway
- Philadelphia Academy of the Fine Arts
- Cobblestone streets and European-style boulevards
- Fairmount Park, beautiful mecca for walkers, runners, bikers and rowers
- Philadelphia Orchestra
- Pennsylvania Ballet
- The Opera Company of Philadelphia
- The College of Physicians of Philadelphia, the country's oldest medical society
- World Cafe Live, Electric Factory, Trocadero, Tower Theater, TLA music venues
- Terry Gross and "Fresh Air," her famed NPR radio show
- Reading Terminal Market
- 30th Street Station
- Backdrops and settings for such blockbuster films as Rocky, Philadelphia, Witness, Marley and Me and Silver Linings Playbook
- The Mummers Parade
- Independence Hall, the Liberty Bell and other historical sites
- National Constitution Center
- The Philadelphia Eagles, Flyers, Phillies and 76ers
- Temple Owls basketball and football
- Cheesesteaks, hoagies, soft pretzels and water ice

Temple University School of Medicine's Mission

Temple University School of Medicine is dedicated to excellence in education, research and patient care, achieved by faculty, staff and learners who represent the diversity of society. It provides:

- Education that is patient-centered, instilling in learners the School's ethic of human service and lifelong learning
- Research that advances and integrates basic and clinical science
- Patient care administered with compassion and understanding, utilizing contemporary knowledge and techniques



Residency Match

Classes of 2012, 2013 and 2014

Anesthesiology

Baylor College of Medicine, TX
 Cedars-Sinai Medical Center, CA
 Cooper University Hospital, NJ
 Georgetown University Hospital, DC
 Hospital of the University of Pennsylvania, PA
 Medical College of Wisconsin, WI
 New York-Presbyterian Hospital/Columbia University Medical Center, NY
 New York University, NY
 Penn State Hershey Medical Center, PA
 Texas Tech University Affiliate — Lubbock, TX
 Thomas Jefferson University, PA
 UC Davis Medical Center, CA
 UMDNJ-RW Johnson, NJ
 University Hospitals Case Medical Center, OH
 University of Maryland, MD
 University of Minnesota, MN
 University of Pittsburgh, PA
 University of Southern California, CA
 University of Vermont/Fletcher Allen, VT
 Western Pennsylvania Hospital, PA
 Yale-New Haven Hospital, CT

Child Neurology

Mayo Clinic, MN
 New York-Presbyterian Hospital/Weill Cornell Medical Center, NY
 New York University, NY
 University of Colorado, CO

Dermatology

Drexel/Hahnemann University Hospital, PA
 University of Iowa, IA

Emergency Medicine

Albert Einstein Medical Center, PA
 Allegheny General Hospital, PA
 Baystate Medical Center, MA
 Christiana Care, DE
 Cook County-Stroger Hospital, IL
 Cooper University Hospital, NJ
 Darnall Army Medical Center, TX
 Drexel/Hahnemann University Hospital, PA
 Einstein/Beth Israel Medical Center, NY
 Einstein/Jacobi Medical Center, NY
 Florida Hospital — Orlando, FL
 Geisinger Health System, PA
 Icahn School of Medicine at Mt. Sinai, NY
 Kaiser Permanente — San Diego, CA
 Maimonides Medical Center, NY
 North Shore — LIJ Health System, NY
 Northwestern McGaw/NMH/VA, IL
 Oregon Health Science University, OR
 Resurrection Medical Center, IL
 St. Luke's Hospital — Bethlehem, PA
 Stony Brook Teaching Hospital, NY
 Temple University Hospital, PA
 Texas Tech University Affiliate — El Paso, TX
 Thomas Jefferson University, PA
 UCLA Medical Center, CA
 UMDNJ-RW Johnson, NJ
 University of Cincinnati Medical Center, OH

University of Florida — Jacksonville, FL
 University of Illinois, IL
 University of Massachusetts, MA
 University of North Carolina Hospitals, NC
 University of Pittsburgh, PA
 University of Southern California, CA
 University of Virginia, VA
 University of Washington Affiliated Hospitals, WA
 Washington Hospital Center, DC

Family Medicine

Abington Memorial Hospital, PA
 Baylor College of Medicine, TX
 Chestnut Hill Hospital, PA
 Chippenham Medical Center, VA
 Christiana Care, DE
 Crozer-Chester Medical Center, PA
 Duke University Medical Center, NC
 Forbes Family Medicine, PA
 Institute for Family Health, NY
 Lancaster General Hospital, PA
 Mayo Clinic, MN
 Medical Center Beaver, PA
 Mountain Area Health Education Center, NC
 Reading Hospital, PA
 St. Luke's Hospital — Bethlehem, PA
 St. Vincent's Medical Center, FL
 Steward Carney Hospital, MA
 Sutter Health, CA
 Thomas Jefferson University, PA
 University of Alabama, AL
 UC Davis Medical Center, CA
 University of Maryland, MD
 University of Pittsburgh, McKeesport, PA
 Utah Health Care Institute, UT
 White Memorial Medical Center, CA
 Wright State University, OH

General Surgery

Allegheny General Hospital, PA
 Barnes-Jewish Hospital, MO
 Baystate Medical Center, MA
 Brookdale University Hospital and Medical Center, NY
 Cedars-Sinai Medical Center, CA
 Cooper University Hospital, NJ
 Dartmouth-Hitchcock Medical Center, NH
 Eastern Virginia Medical School, VA
 Einstein/Beth Israel Medical Center, NY
 Eisenhower Army Medical Center, GA
 Geisinger Health System, PA
 Icahn SOM St. Luke's Roosevelt, NY
 Lankenau Medical Center, PA
 Lehigh Valley Hospital, PA
 Mercy Catholic Medical Center, PA
 New York-Presbyterian Hospital/Weill Cornell Medical Center, NY
 Palmetto Health, SC
 Penn State Hershey Medical Center, PA
 Rhode Island Hospital/Brown University, RI
 St. Agnes Hospital, MD

St. Luke's Hospital — Bethlehem, PA
 Temple University Hospital, PA
 Travis Air Force Base, CA
 UC San Francisco — Fresno, CA
 UMDNJ-New Jersey Medical, Newark, NJ
 University of Kansas — Wichita, KS
 University of Pittsburgh, PA
 UPMC Mercy Hospital, PA
 Wake Forest Baptist Medical Center, NC
 York Hospital, PA

Internal Medicine

Barnes-Jewish Hospital, MO
 Baylor College of Medicine, TX
 Beth Israel Deaconess Medical Center, MA
 Boston University Medical Center, MA
 CA Pacific Medical Center, CA
 Cedars-Sinai Medical Center, CA
 Cleveland Clinic Foundation, OH
 Dartmouth-Hitchcock Medical Center, NH
 Drexel/Hahnemann University Hospital, PA
 Einstein/Beth Israel Medical Center, NY
 Eisenhower Medical Center, CA
 Geisinger Health System, PA
 George Washington University, DC
 Georgetown University Hospital, DC
 Harbor-UCLA Medical Center, CA
 Penn State Hershey Medical Center, PA
 Hospital of the University of Pennsylvania, PA
 Jackson Memorial Hospital, FL
 Johns Hopkins Hospital, MD
 Kaiser Permanente — Santa Clara, CA
 Kaiser Permanente — So. Cal. Region, CA
 New York University, NY
 Olive View — UCLA Medical Center, CA
 Oregon Health and Science University, OR
 Pennsylvania Hospital, PA
 Rhode Island Hospital/Brown University, RI
 SAUSHEC — Brooke Army Medical Center, TX
 Temple University Hospital, PA
 Thomas Jefferson University Hospital, PA
 Tripler Army Medical Center, HI
 Tufts Medical Center, MA
 Tulane University, LA
 UC Davis Medical Center, CA
 UC Irvine Medical Center, CA
 UCLA Medical Center, CA
 UC San Diego Medical Center, CA
 UC San Francisco, CA
 UMDNJ-New Jersey Medical, Newark, NJ
 UMDNJ-RW Johnson, NJ
 University of Chicago Medical Center, IL
 University of Colorado, CO
 University of Florida — Shands Hospital, FL
 University of Maryland, MD
 University of Rochester/Strong Memorial, NY
 University of Southern California, CA
 University of Virginia, VA
 University of Wisconsin Hospital and Clinics, WI
 Virginia Commonwealth University, VA
 Virginia Mason Medical Center, WA
 West Virginia University, WV

Internal Medicine — International Health

Case Western University Hospitals, OH

Medicine — Dermatology

Massachusetts General Hospital, MA

Medicine — Pediatrics

Geisinger Health System, PA

University of Pittsburgh, PA

Medicine — Primary

Hospital of the University of Pennsylvania, PA

Rhode Island Hospital/Brown University, RI

UC Davis Medical Center, CA

University of Washington Affiliated
Hospitals, WA

Neurological Surgery

Temple University Hospital, PA

University of Buffalo, NY

University of Vermont/Fletcher Allen, VT

Neurology

Beth Israel Deaconess Medical Center, MA

Duke University Medical Center, NC

Geisinger Health System, PA

Johns Hopkins Hospital, MD

Loyola University Medical Center, IL

Rush University Medical Center, IL

St. Joseph's Hospital, AZ

Stanford University, CA

SUNY HSC Brooklyn, NY

Temple University Hospital, PA

Thomas Jefferson University, PA

UC Davis Medical Center, CA

UC Irvine Medical Center, CA

University of Florida, FL

Obstetrics — Gynecology

Christiana Care, DE

Duke University Medical Center, NC

George Washington University, DC

Good Samaritan Hospital, OH

Harbor-UCLA Medical Center, CA

Kaiser Memorial Hospital, FL

Kaiser Permanente — LA, CA

Medical University of South Carolina, SC

Mt. Sinai Hospital, NY

Naval Medical Center — Portsmouth, VA

North Shore — LIJ Health System, NY

Pennsylvania Hospital, PA

St. Louis University, MO

St. Luke's Hospital — Bethlehem, PA

St. Peter's University Hospital, NJ

SUNY HSC Brooklyn, NY

Temple University Hospital, PA

Thomas Jefferson University, PA

UC San Francisco, CA

University of Maryland, MD

University of Pittsburgh, PA

Western Pennsylvania Hospital, PA

Ophthalmology

Drexel/Hahnemann University Hospital, PA

Nassau University Medical Center, NY

New York University, NY

Penn State Hershey Medical Center, PA

SUNY Stony Brook, NY

Temple University Hospital, PA

University of Oklahoma, OK

Wake Forest University, NC

Wills Eye Hospital, PA

Orthopaedic Surgery

Allegheny General Hospital, PA

Cleveland Clinic Foundation, OH

Geisinger Health System, PA

Harbor-UCLA Medical Center, CA

Icahn SOM at Mount Sinai, NY

Maimonides Medical Center, NY

Mayo Clinic, MN

North Shore — LIJ Health System, NY

New York-Presbyterian Hospital/Columbia

University Medical Center, NY

Temple University Hospital, PA

University of North Carolina Hospitals, NC

Otolaryngology

Temple University Hospital, PA

Texas A&M — Scott and White, TX

University of Mississippi Medical Center —

Jackson, MS

University of Nebraska, NE

Pathology

Creighton University Hospital, NE

Emory University, GA

University of Pittsburgh, PA

Pediatrics

Baystate Medical Center, MA

Case Western University Hospitals, OH

Children's Hospital of Philadelphia, PA

Cincinnati Children's Hospital, OH

Cleveland Clinic Children's Hospital, OH

Duke University Medical Center, NC

Eastern Virginia Medical School, VA

Einstein/Jacobi Medical Center, NY

Einstein/Montefiore Medical Center, NY

Georgetown University Hospital, DC

Jackson Memorial Hospital, FL

Jefferson Medical College/DuPont

Children's Hospital, PA

Johns Hopkins Hospital, MD

Medical College of Wisconsin, WI

Medical University of South Carolina, SC

National Capital Consortium, MD

NMC Portsmouth, VA

North Shore — LIJ Health System, NY

New York-Presbyterian Hospital/Columbia

University Medical Center, NY

Our Lady of the Lake Children's Hospital, LA

Penn State Hershey Medical Center, PA

Pitt County Memorial Hospital/Brody, NC

Rhode Island Hospital/Brown University, RI

Rush University Medical Center, IL

St. Christopher's Hospital for Children, PA

UC Davis Medical Center, CA

UC Irvine Medical Center, CA

UCLA Medical Center, CA

University of Connecticut Health Center, CT

University of Michigan Hospitals — Ann

Arbor, MI

University of Rochester/Strong Memorial, NY

Virginia Commonwealth University, VA

Walter Reed Army Medical Center, DC

Pediatrics — Primary Care

University of North Carolina Hospitals, NC

Pediatrics/Psychiatry/Child Psychiatry

Tufts Medical Center, MA

Physical Medicine and Rehabilitation

Harvard/Spaulding, MA

Northwestern McGaw/RIC, IL

Stanford University, CA

Temple University Hospital, PA

Thomas Jefferson University, PA

University of Pittsburgh, PA

University of Rochester/Strong Memorial, NY

University of Utah, UT

University of Washington Affiliated Hospitals, WA

Virginia Commonwealth University, VA

Plastic Surgery

Indiana University, IN

Psychiatry

California Pacific Medical Center, CA

Cooper University Hospital, NJ

Einstein/Beth Israel Medical Center, NY

Einstein/Montefiore Medical Center, NY

Hospital of the University of Pennsylvania, PA

Medical University of South Carolina, SC

NCC Walter Reed National Medical Center, MD

North Shore — LIJ Health System, NY

Temple University Hospital, PA

UC San Diego Medical Center, CA

Psychiatry — Family Medicine

University Hospital — Cincinnati, OH

Radiation — Oncology

Jackson Memorial Hospital, FL

SUNY HSC Brooklyn, NY

SUNY Upstate Medical Center, NY

Tufts Medical Center, MA

University of Chicago Medical Center, IL

University of Southern California, CA

WSU Detroit Medical Center, MI

Radiology — Diagnostic

Albert Einstein Medical Center, PA

Boston University Medical Center, MA

Dartmouth — Hitchcock Medical Center, NH

Drexel/Hahnemann University Hospital, PA

Einstein/Beth Israel Medical Center, NY

Icahn SOM St. Luke's Roosevelt, NY

Jackson Memorial Hospital, FL

Mariopa Integrated Health System, AZ

New York-Presbyterian Hospital/Weill Cornell

Medical Center, NY

Norwalk Hospital, CT

Rush University Medical Center, IL

Santa Clara Valley Medical Center, CA

Temple University Hospital, PA

Thomas Jefferson University, PA

Tripler Army Medical Center, HI

UC Davis Medical Center, CA

University of Arizona, AZ

University of Massachusetts, MA

University of Michigan Hospitals, MI

University of New Mexico, NM

University of Pittsburgh, PA

University of Southern California, CA

University of Wisconsin, WI

Vanderbilt University Medical Center, TN

Winthrop University Hospital, NY

Urology

Penn State Hershey Medical Center, PA

Hospital of the University of Pennsylvania, PA

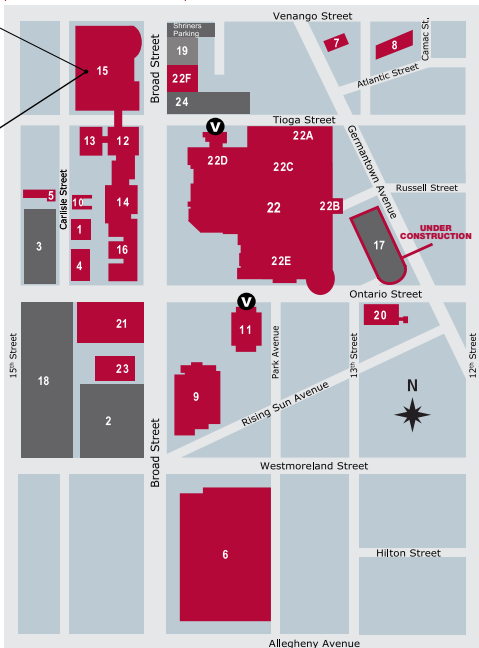
SUNY HSC Brooklyn, NY

University of Louisville, KY

University of Southern California, CA

University of Texas, San Antonio, TX

Health Sciences Center Campus Map



- | | | |
|--|--|---|
| 1. 3421 Carlisle Street | 13. Kresge West Building (School of Medicine) | 22. Temple University Hospital |
| 2. Battersby Parking Lot (employees only) | 14. Medical Research Building (MRB) (School of Medicine) | 22A. Ambulatory Care Center |
| 3. Carlisle West Parking Garage (employees only) | 15. Medicine Education and Research Building (MERB) (School of Medicine) | 22B. Emergency Entrance/Trauma Center |
| 4. Central Chilled Water Plant | 16. Old Medical School Building (OMS) (School of Medicine) | 22C. Park Avenue Pavilion |
| 5. Central Store Room | 17. Ontario East Parking Garage (patient/visitor) <i>Closed</i> | 22D. Parkinson Pavilion |
| 6. Dentistry, Kornberg School of Health Professions, College of/ Pharmacy, School of | 18. Ontario West Parking Garage (employees only) | 22E. Rock Pavilion |
| 7. Facilities Management | 19. Shriners Hospitals for Children | 22F. Willet and Mary F. Boyer Pavilion |
| 8. Ford Building/Maintenance Shops | 20. Steam Plant | 23. Temple University Physician's Medical Office Building |
| 9. Health Professions, College of/ Pharmacy, School of | 21. Student Faculty Center (SFC) | 24. Tioga Parking Garage (patient/visitor) |
| 10. Hudson Building | | V= Valet Parking |
| 11. Jones Hall | | |
| 12. Kresge Science Hall (School of Medicine) | | |

Health Sciences Center Campus

Temple University's Health Sciences Center, home to the College of Health Professions, the Kornberg School of Dentistry, School of Medicine and School of Pharmacy, offers a dynamic, collaborative environment for both students and professionals. The School of Podiatric Medicine, located in Center City, also has teaching, research and healthcare facilities at the Health Sciences Center.

Temple is widely recognized for providing exceptional primary care to an underserved community as well as for tertiary and quaternary services that draw patients, faculty and students from near and far. Our research strengths lie in cardiovascular disease, neuroscience, pharmacokinetics, obesity, drug abuse, lung disease and cancer cell biology.

Facts about the Medical Education and Research Building (MERB)

- The MERB opened in the summer of 2009.
- More than 16 flexible learning spaces, which include small group break-out rooms that are supported by the newest technology.
- 249,000 square feet of flexible, state-of-the-art laboratory space for scientific research, supporting current trends towards interdisciplinary and translational research.
- A clinical skills and robotic simulation center where students practice doctoring and surgical skills on mannequins, simulators and patient actors.
- An attractive café, spacious and comfortable lobby, and ample study and meeting space to support the community life of the school.
- A combined 50,000-square-foot library for the Health Sciences Center that brings together medicine, dentistry, pharmacy, podiatry and related health professions, offering study areas for groups and individuals, multimedia and wireless technology, and 24-hour accessibility.
- An all-glass, collaborative learning and research tower, offering dramatic views of the Center City skyline, housing a series of stacked, multi-purpose rooms that can be used for teaching, meetings, instruction support, study space and dining.
- A third-floor bridge crossing Tioga Street, connecting the Medical Education and Research Building with other teaching and research facilities.
- Interior atrium space with balconies to create a home-away-from-home atmosphere and usable outdoor space on a raised plaza on Broad Street.

